



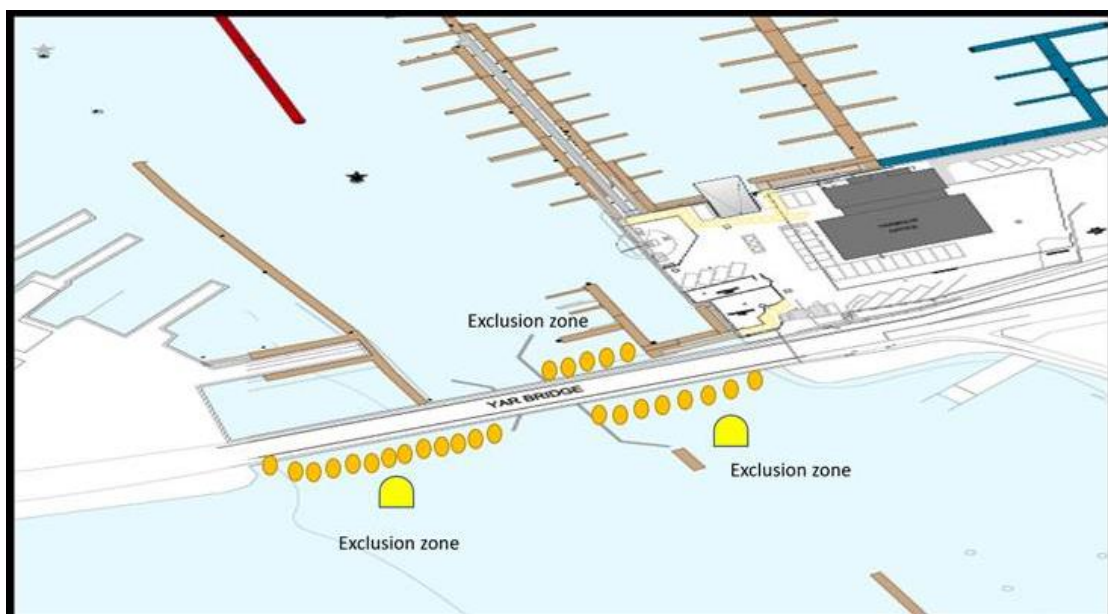
**The Yarmouth (Isle of Wight) Harbour Commissioners
Notice to Mariners
Yarmouth Harbour**

**RESTRICTION OF NAVIGATION WESTERN AND
EASTERN SIDE OF THE YAR BRIDGE**

Date :02/08/2019

Island roads are painting the Yar Bridge starting on the static parts. Scaffolding has been suspended on the western side and they are now starting the Eastern side. The scaffolding will be suspended from the bridge structure across the length of this section protruding downwards approximately 2m in length as it is on the western side. For safety reasons there will strictly be no access under the bridge on both sides while the works are ongoing.

The river is marked by two strings of bouys restricting access from the landward side to the sacrificial piles as marked in the diagram below. There is 1 unlit yellow marker buoy on the south eastern side and a yellow flashing marker buoy on the South western side.



This is phase 1 and 2 of the works and is expected to last for approximately 9 weeks. Vessels transiting the bridge will be unaffected but please proceed with caution. Usual procedure applies for bridge openings. Call sign YAR Bridge on CH68.

There will be 3 phases, this notice will self-cancel on completion of the phases 1 and 2. The date for Phase 3 of the works has yet to be confirmed.

Scott Neill

Scott Neill
Deputy Harbour Master
Tel: +44(0)1983 760321